

1. Product Information:

The AX88179/178A Controller is a single chip USB 3.0/2.0 to Gigabit Ethernet Controller. This is an AX88179/178A NDIS driver for WinCE 6.0 embedded system. It has been qualified under WinCE 6.0 CETK on an Intel Pentium 4 2.8GHz system with a NEC D720100AGM USB 2.0 PCI Host adapter running WinCE 6.0 CEPC x86 Platform Image.

2. Files Descriptions:

The AX88179/178A WinCE driver package includes the files as described below,

RELEASE.PDF	This file
AX88179_178A.DLL	Driver file
PROJECT.REG	Sample REG file
PROJECT.BIB	Sample BIB file
CETK_LOG\1C_TEST.LOG	CETK One Card Test log file (x86 CEPC)
CETK_LOG\2C_TEST.LOG	CETK Two Card Test log file (x86 CEPC)
CETK_LOG\1C_TEST.TXT	CETK One Card Test readme file
CETK_LOG\2C_TEST.TXT	CETK Two Card Test readme file

3. Revision History:

Revision	Author	Date	Description
v1.2.0.0	Alex Chung	2013/07/31	1. Initial release.

4. Driver Installation:

1. Add below AX88179/178A registry values into the \$(_WINCEROOT) \ PUBLIC \ CEBASE \ OAK \ FILES \ PROJECT.REG file.

```
; @CESYSGEN IF BSP_NIC_AX88179_178A
;IF BSP_NIC_AX88179_178A
[HKEY_LOCAL_MACHINE\Drivers\USB\LoadClients\2965_6026\Default\Default\AX88179_178A]
    "DLL"="AX88179_178A.DLL"
    "Prefix"="ASX"

[HKEY_LOCAL_MACHINE\Drivers\USB\LoadClients\2965_6032\Default\Default\AX88179_178A]
    "DLL"="AX88179_178A.DLL"
    "Prefix"="ASX"

[HKEY_LOCAL_MACHINE\Drivers\USB\ClientDrivers\AX88179_178A]
    "DLL"="AX88179_178A.DLL"
    "Prefix"="ASX"

[HKEY_LOCAL_MACHINE\Comm\AX88179_178A]
    "DisplayName"="ASIX AX88179/178A USB 3.0/2.0 Gigabit Ethernet Driver"
    "Group"="NDIS"
    "ImagePath"="AX88179_178A.dll"

[HKEY_LOCAL_MACHINE\Comm\AX88179_178A\Linkage]
    "Route"=multi_sz:"AX88179_178A1","AX88179_178A2","AX88179_178A3","AX88179_178A4"

[HKEY_LOCAL_MACHINE\Comm\AX88179_178A1]
    "DisplayName"="ASIX AX88179/178A USB 3.0/2.0 Gigabit Ethernet Driver"
    "Group"="NDIS"
    "ImagePath"="AX88179_178A.dll"

[HKEY_LOCAL_MACHINE\Comm\AX88179_178A1\Parms]
    "BusNumber"=dword:0
    "BusType"=dword:0
;    "NetworkAddress"="02-12-34-56-78-9a" ;Define an override MAC address 02-12-34-56-78-9a

;=====
; AX88179_178A Driver Parameters:
;=====
"SpeedDuplex"=dword:0 ;0 = "AutoNegotiation"; 1 = "10BaseT Half"; 2 = "10BaseT Full";
;3 = "100BaseTx Half"; 4 = "100BaseTx Full";
;6 = "1000BaseT Full"
"FlowControl"=dword:3 ;0 = "Disable"; 1 = "TxEnable"; 2 = "RxEnable"; 3 = "TxRxEnable"
"WakeOnLinkChange"=dword:1 ;0 = "Disable"; 1 = "Enable"
"WakeOnMagicPacket"=dword:1 ;0 = "Disable"; 1 = "Enable"
"WakeOnPattern"=dword:0 ;0 = "Disable"; 1 = "Enable"
"MaskTimer"=dword:2 ;0 = "0 second"; 1 = "4 seconds"; 2 = "8 seconds"; 3 = "12 seconds"
;4 = "16 seconds"; 5 = "20 seconds"; 6 = "24 seconds"; 7 = "28 seconds"

"PriorityVLANTag"=dword:0 ;0 = "Priority & VLAN Disable"; 1 = "Priority Enable"
;2 = "VLAN Enable"; 3 = "Priority & VLAN Enable"
"WolLinkSpeed"=dword:1 ;0 = "Disable"; 1 = "Enable"
"TCPChecksumOffloadIPv4"=dword:0 ;0 = "Disable"; 1 = "TxEnable"; 2 = "RxEnable"; 3 = "TxRxEnable"
"UDPChecksumOffloadIPv4"=dword:0 ;0 = "Disable"; 1 = "TxEnable"; 2 = "RxEnable"; 3 = "TxRxEnable"
"TCPChecksumOffloadIPv6"=dword:0 ;0 = "Disable"; 1 = "TxEnable"; 2 = "RxEnable"; 3 = "TxRxEnable"
```

```

"UDPChecksumOffloadIPv6"=dword:0 ;0 = "Disable"; 1 = "TxEnable"; 2 = "RxEnable"; 3 = "TxRxEnable"
"IPChecksumOffloadIPv4"=dword:3 ;0 = "Disable"; 1 = "TxEnable"; 2 = "RxEnable"; 3 = "TxRxEnable"
"LsoV1IPv4"=dword:1 ;0 = "Disable"; 1 = "Enable"
"VlanID"=dword:0 ;0 ~ 4095
"AutoDetach"=dword:0 ;0 = "Disable"; 1 = "Enable"; 2 = "Use Eeprom Setting"
"AutoDetachTimer"=dword:2 ;0 = "3 second"; 1 = "4 seconds"; 2 = "5 seconds"; 3 = "6 seconds"
;4 = "7 seconds"; 5 = "8 seconds"; 6 = "9 seconds"; 7 = "10 seconds"
"UsbPowerSave"=dword:0 ;0 = "0x00"; 16 = "0x10"; 80 = "0x50"; 240 = "0xF0"; 255 = "0xFF"
"JumboFrame"=dword:0 ;0 = "Disable"; 1 = "2KB"; 2 = "4KB"

[HKEY_LOCAL_MACHINE\Comm\AX88179_178A1\Parms\TcpIp]
; "EnableDHCP"=dword:0 ;Disable DHCP function
; "IpAddress"="xxx.xxx.xxx.aaa" ;Define your IP address (xxx.xxx.xxx.aaa)
; "Subnetmask"="255.255.255.0" ;Define Submask IP address
; "DefaultGateway"="xxx.xxx.xxx.bbb" ;Define Gateway IP address
; "DNS"="xxx.xxx.xxx.ccc" ;Define DNS server IP address

"AutoCfg"=dword:1
"EnableDHCP"=dword:1 ;Enable DHCP function
"UseZeroBroadcast"=dword:0 ;Use zero for broadcast address?

;ENDIF BSP_NIC_AX88179_178A
; @CESYSGEN ENDIF BSP_NIC_AX88179_178A
  
```

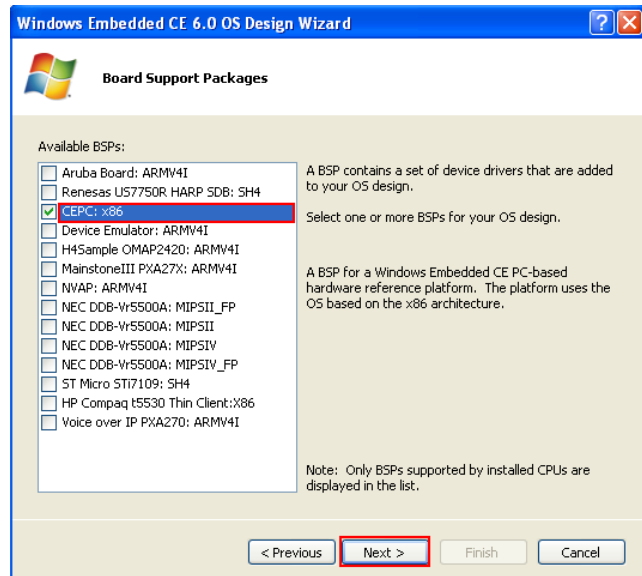
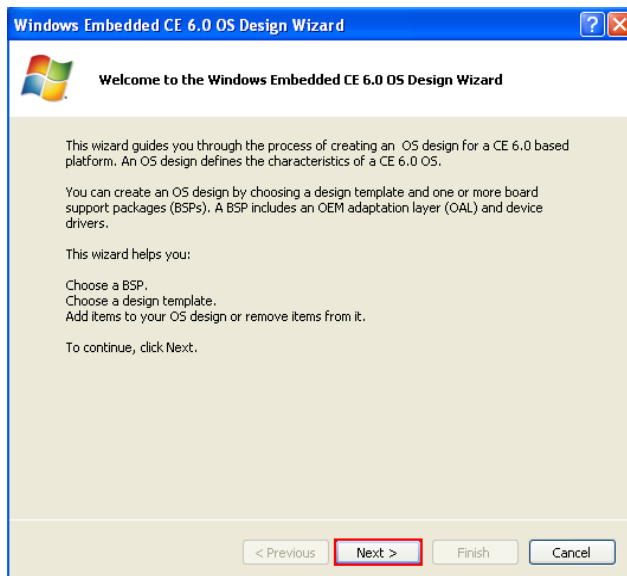
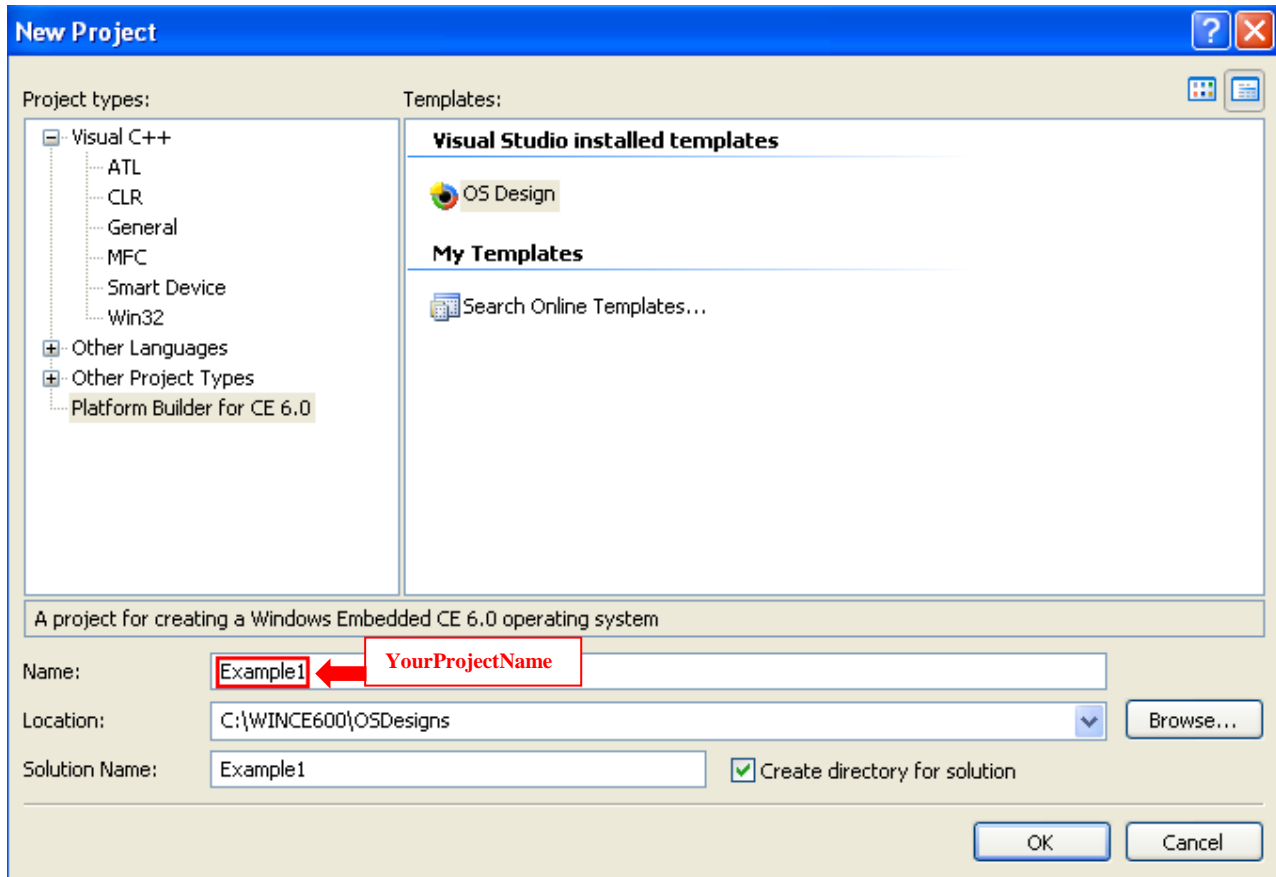
2. Add below AX88179/178A driver file path and attributes into the \$(_WINCEROOT)\PUBLIC\CEBASE\OAK\FILES\PROJECT.BIB file.

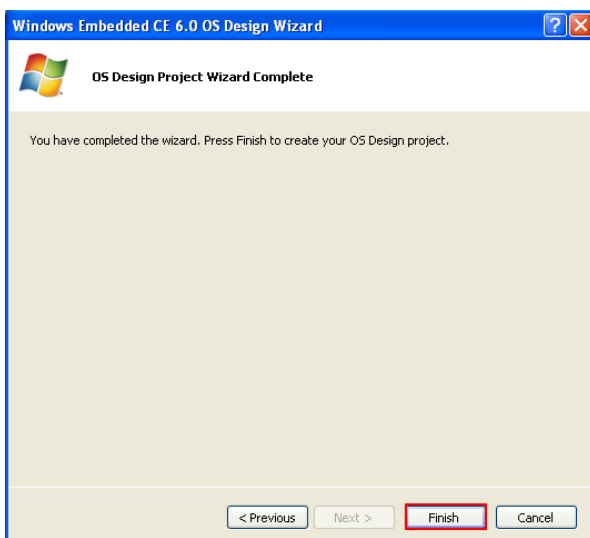
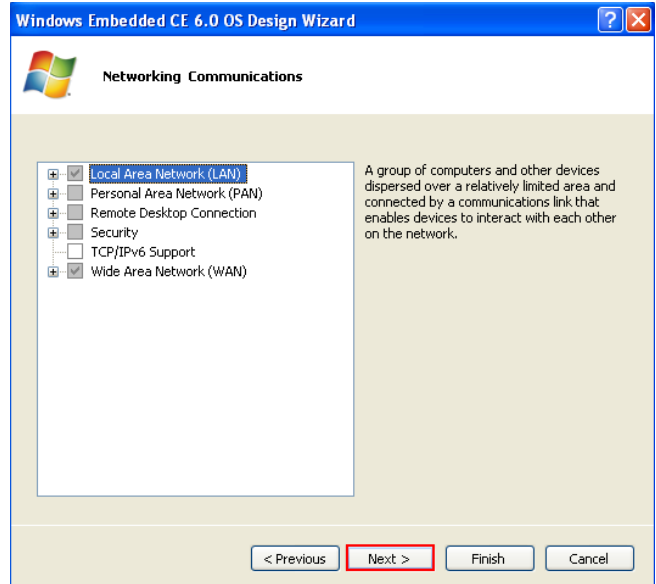
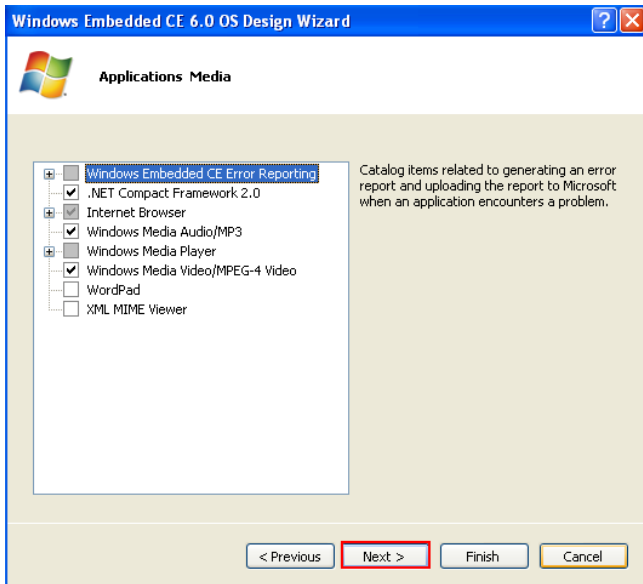
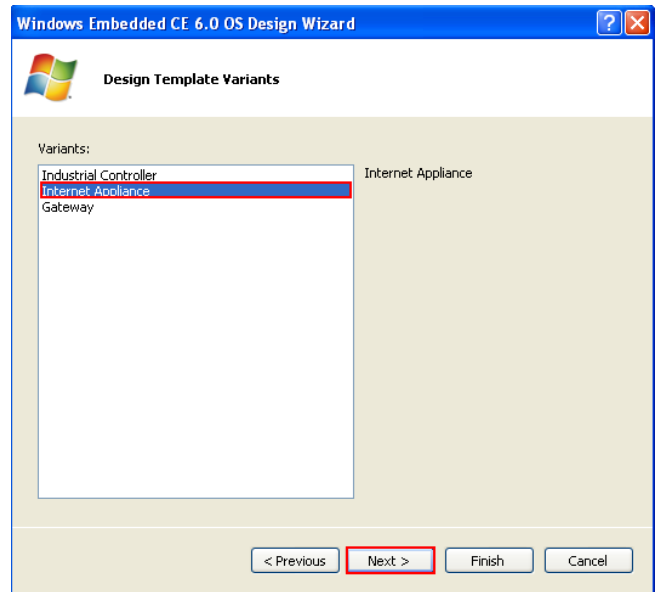
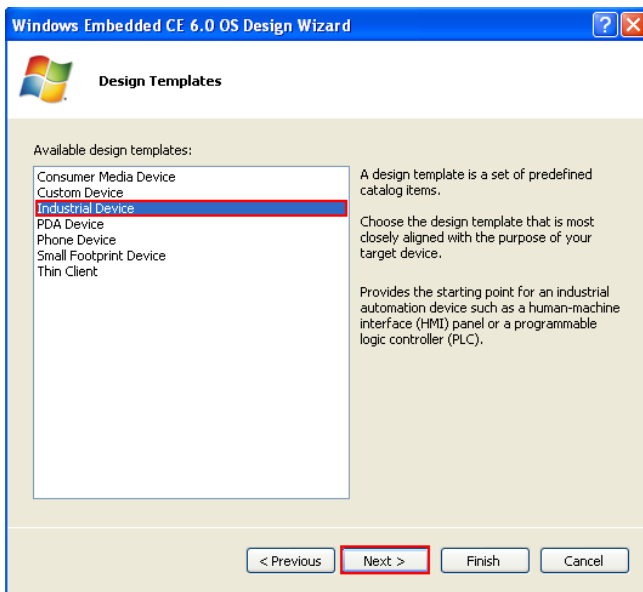
```

MODULES
; Name      Path                                          Memory Type
; -----
ax88179_178a.dll  $(_FLATRELEASEDIR)\ax88179_178a.dll      NK SHK

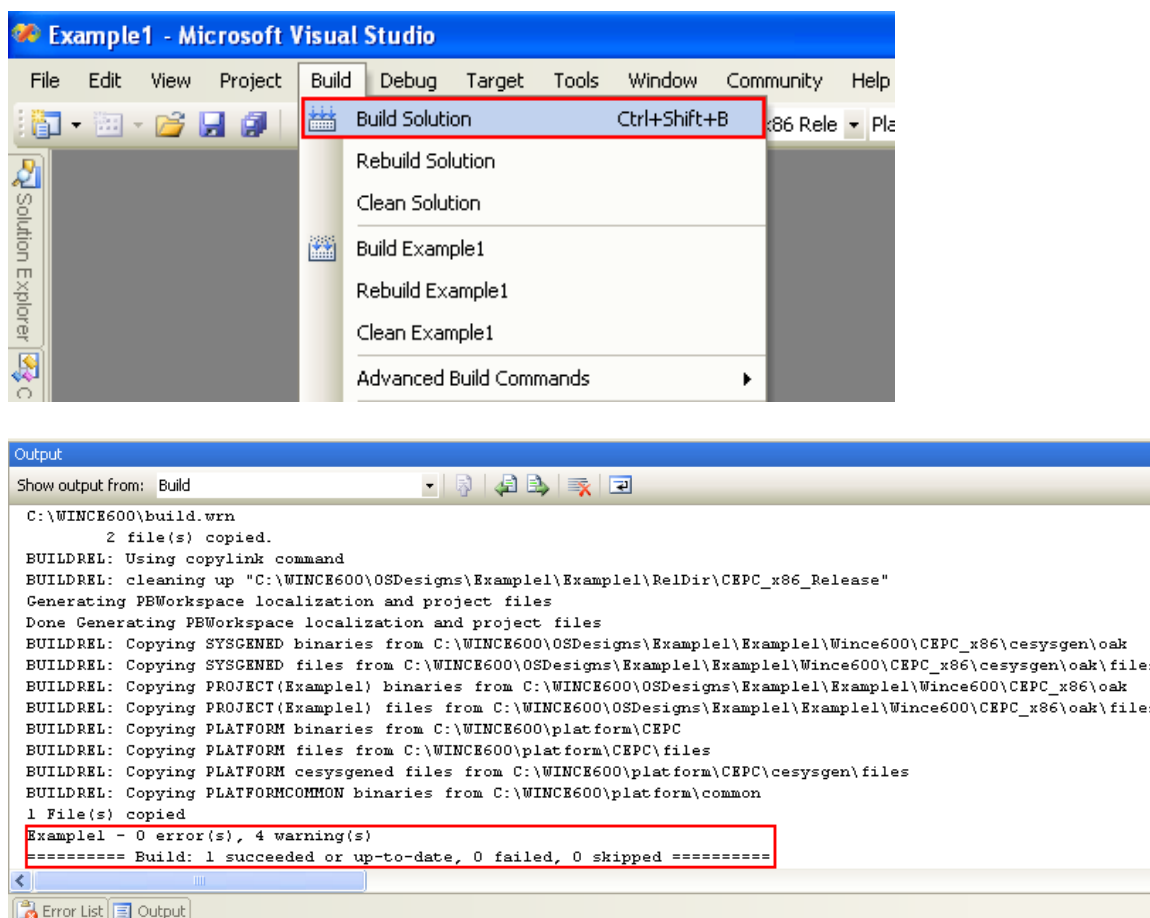
FILES
; Name      Path                                          Memory Type
; -----
  
```

3. Install new platform for your project





4. Choose “Build Solution” from the Build OS menu to build this project.

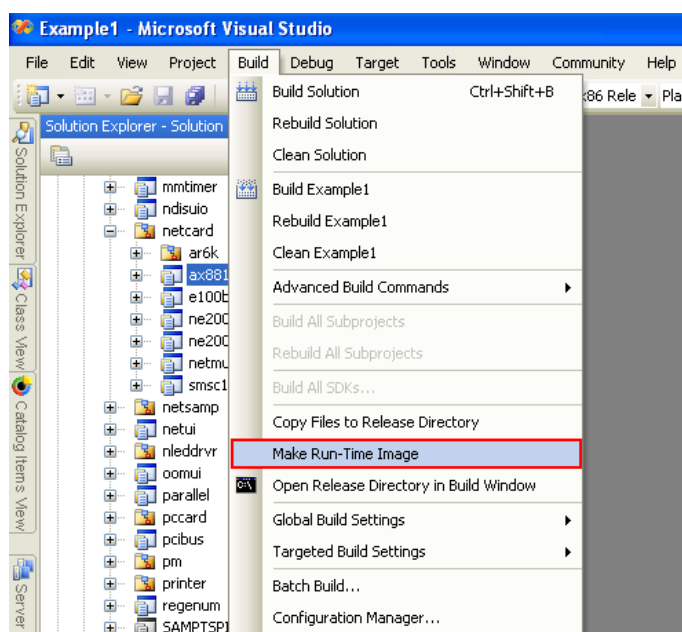


5. Copy AX88179_178A.DLL file into the
 \$(_WINCEROOT)\OSDesigns\<YourProjectName>\<YourProjectName>\WINCE600\CEPC_x86\OAK\files subdirectory.

Note: Please check if the PROJECT.REG in
 \$(_WINCEROOT)\OSDesigns\<YourProjectName>\<YourProjectName>\RelDir\CEPC_x86_Release directory is included all contents modified in Step 1.

Note: Please check if the PROJECT.BIB in
 \$(_WINCEROOT)\OSDesigns\<YourProjectName>\<YourProjectName>\RelDir\CEPC_x86_Release directory is included all contents modified in Step 2.

6. Chose “Build Solution” from the Build OS menu to build this platform image file (NK.Bin).



```

Output
Show output from: Build
Physical End Address: 814807f8
Start RAM: 81481000
Start of free RAM: 814de000
End of RAM: 81c00000
Number of Modules: 171
Number of Copy Sections: 3
Copy Section Offset: 810d5ed4
FileSys 4K Chunks/Mbyte: 128 <2Mbyte 128 2-4Mbyte 0 4-6Mbyte 0 >6Mbyte
CPU Type: 014ch
Miscellaneous Flags: 0002h
Extensions Pointer: 80221028
Total ROM size: 012607f8 ( 19269624)
Starting ip: 80224cb0
Raw files size: 005795be
Compressed files size: 00293a03
Compacting bin file...
Done!
makeimg: Check for C:\WINCE600\OSDesigns\Example1\Example1\RelDir\CEPC_x86_Release\PostRomImage.bat to run.
makeimg: Check for C:\WINCE600\OSDesigns\Example1\Example1\RelDir\CEPC_x86_Release\PostMakeImg.bat to run.
makeimg: Change directory to C:\WINCE600.
makeimg: run command: cmd /C C:\WINCE600\public\common\oak\misc\pbpostmakeimg
Example1 - 0 error(s), 10 warning(s)
===== Build: 1 succeeded or up-to-date, 0 failed, 0 skipped =====
  
```

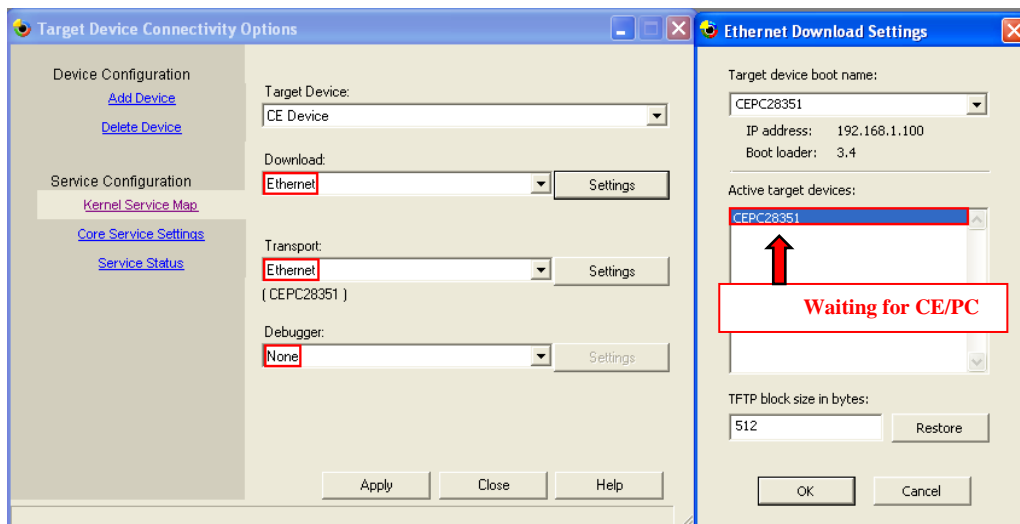
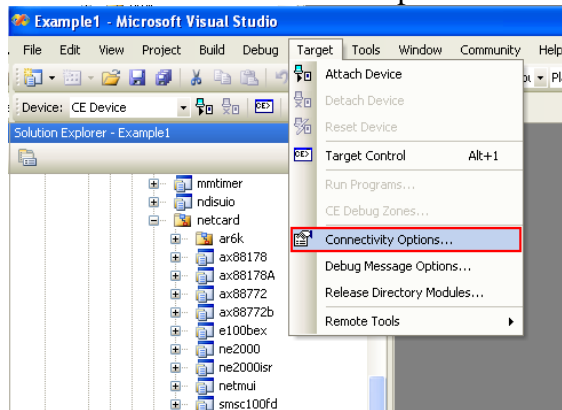
7. Startup your CE/PC to get the connection.
 - 6-1. Install a supported Ethernet adapter (like NE2000 ISA card or RTL8139 PCI card) for Ethernet Boot Loader (eboot.bin) and a ASIX AX88179/178A USB to Gigabit Ethernet adapter for tested WinCE driver.

Note 1: Please set a proper IRQ, IOBASE and IP address in the AUTOEXEC.BAT file of the CE/PC Boot Disk for the Ethernet Boot Loader adapter.
 (For PCI card: set to IRQ=0, IOBASE =0 for auto-detection.
 For ISA card: set to the same IRQ, IOBASE as the H/W setting.)

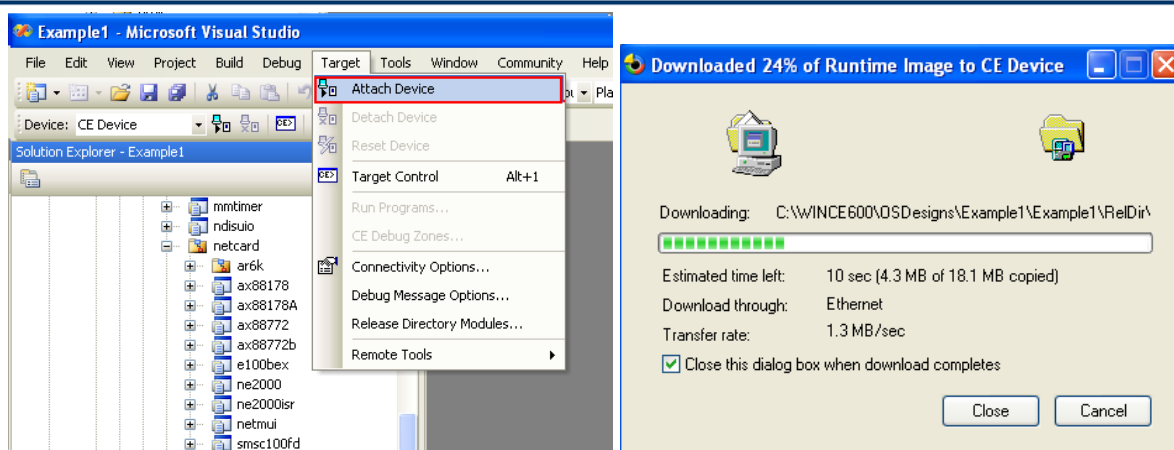
- 6-2. Insert the CE/PC Boot Disk into your CE/PC.
- 6-3. Power ON the CE/PC.
- 6-4. Select “Boot CE/PC (ether via eboot.bin with /L:800x600x16)” from the boot menu.
8. Choose “Connectivity Options” from the Target menu to configure an Ethernet connection for downloading and debugging the image file.
 - 7-1. Select “Ethernet” in the drop-down menu titled “Download”.
 - 7-2. Select “Ethernet” in the drop-down menu titled “Transport”.
 - 7-3. Click “Settings” button associated with the “Download” option.

This will open a new dialog to wait for the available CEPC devices.

 - 7-4. Select “None” in the drop-down menu titled “Debugger”.



9. Choose “Attach Device” from the Target menu to start downloading the Platform Image file onto the CE/PC.



10. After the image file is downloaded successfully, the CE/PC will be booted up to WinCE operation system by running the Platform Image file.

11. Run Ping command to verify the network connection function.

5. Modify Driver Parameters:

1. Modify the B registry values from the \$(_WINCEROOT)\OSDesigns\<YourProjectName>\<YourProjectName>\RelDir\CEPC_x86_Release\PROJECT.REG file.

```

; @CESYSGEN IF BSP_NIC_AX88179_178A
;IF BSP_NIC_AX88179_178A
[HKEY_LOCAL_MACHINE\Drivers\USB\LoadClients\2965_6026\Default\Default\AX88179_178A]
    "DLL"="AX88179_178A.DLL"
    "Prefix"="ASX"

[HKEY_LOCAL_MACHINE\Drivers\USB\LoadClients\2965_6032\Default\Default\AX88179_178A]
    "DLL"="AX88179_178A.DLL"
    "Prefix"="ASX"

[HKEY_LOCAL_MACHINE\Drivers\USB\ClientDrivers\AX88179_178A]
    "DLL"="AX88179_178A.DLL"
    "Prefix"="ASX"

[HKEY_LOCAL_MACHINE\Comm\AX88179_178A]
    "DisplayName"="ASIX AX88179/178A USB 3.0/2.0 Gigabit Ethernet Driver"
    "Group"="NDIS"
    "ImagePath"="AX88179_178A.dll"

[HKEY_LOCAL_MACHINE\Comm\AX88179_178A\Linkage]
    "Route"=multi_sz:"AX88179_178A1","AX88179_178A2","AX88179_178A3","AX88179_178A4"

[HKEY_LOCAL_MACHINE\Comm\AX88179_178A1]
    "DisplayName"="ASIX AX88179/178A USB 3.0/2.0 Gigabit Ethernet Driver"
    "Group"="NDIS"
    "ImagePath"="AX88179_178A.dll"

[HKEY_LOCAL_MACHINE\Comm\AX88179_178A1\Parms]
    "BusNumber"=dword:0
    "BusType"=dword:0
;    "NetworkAddress"="02-12-34-56-78-9a"    ;Define an override MAC address 02-12-34-56-78-9a

;=====
; AX88179_178A Driver Parameters:
;=====
"SpeedDuplex"=dword:0    ;0 = "AutoNegotiation"; 1 = "10BaseT Half"; 2 = "10BaseT Full";
                        ;3 = "100BaseTx Half"; 4 = "100BaseTx Full";
                        ;6 = "1000BaseT Full"
"FlowControl"=dword:3    ;0 = "Disable"; 1 = "TxEnable"; 2 = "RxEnable"; 3 = "TxRxEnable"
"WakeOnLinkChange"=dword:1 ;0 = "Disable"; 1 = "Enable"
"WakeOnMagicPacket"=dword:1 ;0 = "Disable"; 1 = "Enable"
"WakeOnPattern"=dword:0  ;0 = "Disable"; 1 = "Enable"
"MaskTimer"=dword:2      ;0 = "0 second"; 1 = "4 seconds"; 2 = "8 seconds"; 3 = "12 seconds"
                        ;4 = "16 seconds"; 5 = "20 seconds"; 6 = "24 seconds"; 7 = "28 seconds"

"PriorityVLANTag"=dword:0 ;0 = "Priority & VLAN Disable"; 1 = "Priority Enable"
                        ;2 = "VLAN Enable"; 3 = "Priority & VLAN Enable"
"WoLinkSpeed"=dword:1    ;0 = "Disable"; 1 = "Enable"
"TCPChecksumOffloadIPv4"=dword:0 ;0 = "Disable"; 1 = "TxEnable"; 2 = "RxEnable"; 3 = "TxRxEnable"
"UDPChecksumOffloadIPv4"=dword:0 ;0 = "Disable"; 1 = "TxEnable"; 2 = "RxEnable"; 3 = "TxRxEnable"

```

```

"TCPChecksumOffloadIPv6"=dword:0      ;0 = "Disable"; 1 = "TxEnable"; 2 = "RxEnable"; 3 = "TxRxEnable"
"UDPChecksumOffloadIPv6"=dword:0      ;0 = "Disable"; 1 = "TxEnable"; 2 = "RxEnable"; 3 = "TxRxEnable"
"IPChecksumOffloadIPv4"=dword:3       ;0 = "Disable"; 1 = "TxEnable"; 2 = "RxEnable"; 3 = "TxRxEnable"
"LsoV1IPv4"=dword:1                   ;0 = "Disable"; 1 = "Enable"
"VlanID"=dword:0                      ;0 ~ 4095
"AutoDetach"=dword:0                  ;0 = "Disable"; 1 = "Enable"; 2 = "Use Eeprom Setting"
"AutoDetachTimer"=dword:2             ;0 = "3 second"; 1 = "4 seconds"; 2 = "5 seconds"; 3 = "6 seconds"
                                         ;4 = "7 seconds"; 5 = "8 seconds"; 6 = "9 seconds"; 7 = "10 seconds"
"UsbPowerSave"=dword:0                ;0 = "0x00"; 16 = "0x10"; 80 = "0x50"; 240 = "0xF0"; 255 = "0xFF"
"JumboFrame"=dword:0                 ;0 = "Disable"; 1 = "2KB"; 2 = "4KB"

[HKEY_LOCAL_MACHINE\Comm\AX88179_178A1\Parms\TcpIp]
;      "EnableDHCP"=dword:0            ;Disable DHCP function
;      "IpAddress"="xxx.xxx.xxx.aaa"    ;Define your IP address (xxx.xxx.xxx.aaa)
;      "Subnetmask"="255.255.255.0"     ;Define Submask IP address
;      "DefaultGateway"="xxx.xxx.xxx.bbb" ;Define Gateway IP address
;      "DNS"="xxx.xxx.xxx.ccc"          ;Define DNS server IP address

      "AutoCfg"=dword:1
      "EnableDHCP"=dword:1              ;Enable DHCP function
      "UseZeroBroadcast"=dword:0        ;Use zero for broadcast address?

;ENDIF BSP_NIC_AX88179_178A
; @CESYSGEN ENDIF BSP_NIC_AX88179_178A

```

2. Choose "Make Run-Time Image" from the Build OS menu to build a new platform image (NK.BIN) to take effect the new settings.

6. How to configure WinCE 6.0 to run the SROM Programming Tool?

None

7. How to support AX88179/178A board with different Vendor ID/Product ID?

The AX88179/178A WinCE 7.0 driver supports AX88179/178A's default VID/PID (0B95h/1790h)/(0B95h/178Ah). If the VID/PID of your AX88179/178A board is different from AX88179/178A's VID/PID, please follow below procedures to change the VID/PID registry setting of AX88179/178A WinCE 7.0 driver to support your AX88179/178A board.

7-1. Change the VID/PID setting from the Registry File

1. Add the following registry setting highlighted in below **blue** text in the \$(_WINCEROOT)\OSDesigns\<YourProjectName>\<YourProjectName>\RelDir\CEPC_x86_Release\PROJECT.REG file, and then change the VID/PID registry setting to meet the real VID/PID of your AX88179/178A board.

Note: The VID/PID registry values in the PROJECT.REG file are demonstrated in “decimal” numbers. For example, the “2965” means 0B95h in a hexadecimal number; meanwhile, the “6032” means 1790h in a hexadecimal number. The VID/PID registry setting “2965_6032” is for AX88179's default VID/PID (0B95h/1790h); meanwhile, the “6026” means 178Ah in a hexadecimal number. The VID/PID registry setting “2965_6026” is for AX88178A's default VID/PID (0B95h/178Ah).

```

; @CESYSGEN IF BSP_NIC_AX88179_178A
;IF BSP_NIC_AX88179_178A
[HKEY_LOCAL_MACHINE\Drivers\USB\LoadClients\49274_41591\Default\Default\AX88179_178A]
"DLL"="AX88179_178A.DLL"
"Prefix"="ASX"
[HKEY_LOCAL_MACHINE\Drivers\USB\LoadClients\2965_6026\Default\Default\AX88179_178A]
"DLL"="AX88179_178A.DLL"
"Prefix"="ASX"
[HKEY_LOCAL_MACHINE\Drivers\USB\LoadClients\2965_6032\Default\Default\AX88179_178A]
"DLL"="AX88179_178A.DLL"
"Prefix"="ASX"
[HKEY_LOCAL_MACHINE\Drivers\USB\ClientDrivers\AX88179_178A]
"DLL"="AX88179_178A.DLL"
"Prefix"="ASX"
[HKEY_LOCAL_MACHINE\Comm\AX88179_178A]
"DisplayName"="ASIX AX88179/178A USB 3.0/2.0 Gigabit Ethernet Driver"
"Group"="NDIS"
"ImagePath"="AX88179_178A.dll"
[HKEY_LOCAL_MACHINE\Comm\AX88179_178A\Linkage]
"Route"=multi_sz:"AX88179_178A1","AX88179_178A2","AX88179_178A3","AX88179_178A4"
[HKEY_LOCAL_MACHINE\Comm\AX88179_178A1]

```

Change to the VID/PID value of your AX88179/178A board.
 (The VID is C07Ah and the PID is A277h in this example.)

```

"DisplayName"="ASIX AX88179/178A USB 3.0/2.0 Gigabit Ethernet Driver"
"Group"="NDIS"
"ImagePath"="AX88179_178A.dll"

[HKEY_LOCAL_MACHINE\Comm\AX88179_178A1\Parms]
"BusNumber"=dword:0
"BusType"=dword:0
; "NetworkAddress"="02-12-34-56-78-9a" ;Define an override MAC address 02-12-34-56-78-9a
;=====
; AX88179_178A Driver Parameters:
;=====
"SpeedDuplex"=dword:0 ;0 = "AutoNegotiation"; 1 = "10BaseT Half"; 2 = "10BaseT Full";
;3 = "100BaseTx Half"; 4 = "100BaseTx Full";
;6 = "1000BaseT Full"
"FlowControl"=dword:3 ;0 = "Disable"; 1 = "TxEnable"; 2 = "RxEnable"; 3 = "TxRxEnable"
"WakeOnLinkChange"=dword:1 ;0 = "Disable"; 1 = "Enable"
"WakeOnMagicPacket"=dword:1 ;0 = "Disable"; 1 = "Enable"
"WakeOnPattern"=dword:0 ;0 = "Disable"; 1 = "Enable"
"MaskTimer"=dword:2 ;0 = "0 second"; 1 = "4 seconds"; 2 = "8 seconds"; 3 = "12 seconds"
;4 = "16 seconds"; 5 = "20 seconds"; 6 = "24 seconds"; 7 = "28 seconds"

"PriorityVLANTag"=dword:0 ;0 = "Priority & VLAN Disable"; 1 = "Priority Enable"
;2 = "VLAN Enable"; 3 = "Priority & VLAN Enable"
"WolLinkSpeed"=dword:1 ;0 = "Disable"; 1 = "Enable"
"TCPChecksumOffloadIPv4"=dword:0 ;0 = "Disable"; 1 = "TxEnable"; 2 = "RxEnable"; 3 = "TxRxEnable"
"UDPChecksumOffloadIPv4"=dword:0 ;0 = "Disable"; 1 = "TxEnable"; 2 = "RxEnable"; 3 = "TxRxEnable"
"TCPChecksumOffloadIPv6"=dword:0 ;0 = "Disable"; 1 = "TxEnable"; 2 = "RxEnable"; 3 = "TxRxEnable"
"UDPChecksumOffloadIPv6"=dword:0 ;0 = "Disable"; 1 = "TxEnable"; 2 = "RxEnable"; 3 = "TxRxEnable"
"IPChecksumOffloadIPv4"=dword:3 ;0 = "Disable"; 1 = "TxEnable"; 2 = "RxEnable"; 3 = "TxRxEnable"
"LsoV1IPv4"=dword:1 ;0 = "Disable"; 1 = "Enable"
"VlanID"=dword:0 ;0 ~ 4095
"AutoDetach"=dword:0 ;0 = "Disable"; 1 = "Enable"; 2 = "Use Eeprom Setting"
"AutoDetachTimer"=dword:2 ;0 = "3 second"; 1 = "4 seconds"; 2 = "5 seconds"; 3 = "6 seconds"
;4 = "7 seconds"; 5 = "8 seconds"; 6 = "9 seconds"; 7 = "10 seconds"
"UsbPowerSave"=dword:0 ;0 = "0x00"; 16 = "0x10"; 80 = "0x50"; 240 = "0xF0"; 255 = "0xFF"
"JumboFrame"=dword:0 ;0 = "Disable"; 1 = "2KB"; 2 = "4KB"

[HKEY_LOCAL_MACHINE\Comm\AX88179_178A1\Parms\TcpIp]
; "EnableDHCP"=dword:0 ;Disable DHCP function
; "IpAddress"="xxx.xxx.xxx.aaa" ;Define your IP address (xxx.xxx.xxx.aaa)
; "Subnetmask"="255.255.255.0" ;Define Submask IP address
; "DefaultGateway"="xxx.xxx.xxx.bbb" ;Define Gateway IP address
; "DNS"="xxx.xxx.xxx.ccc" ;Define DNS server IP address

"AutoCfg"=dword:1
"EnableDHCP"=dword:1 ;Enable DHCP function
"UseZeroBroadcast"=dword:0 ;Use zero for broadcast address?

;ENDIF BSP_NIC_AX88179_178A
; @CESYSGEN ENDIF BSP_NIC_AX88179_178A

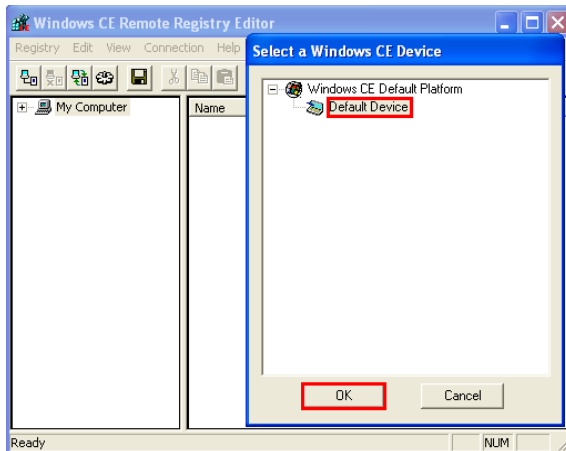
```

2. Choose **Build OS>Make Run-Time Image** to build a new platform image (NK.BIN) to take effect the new settings.

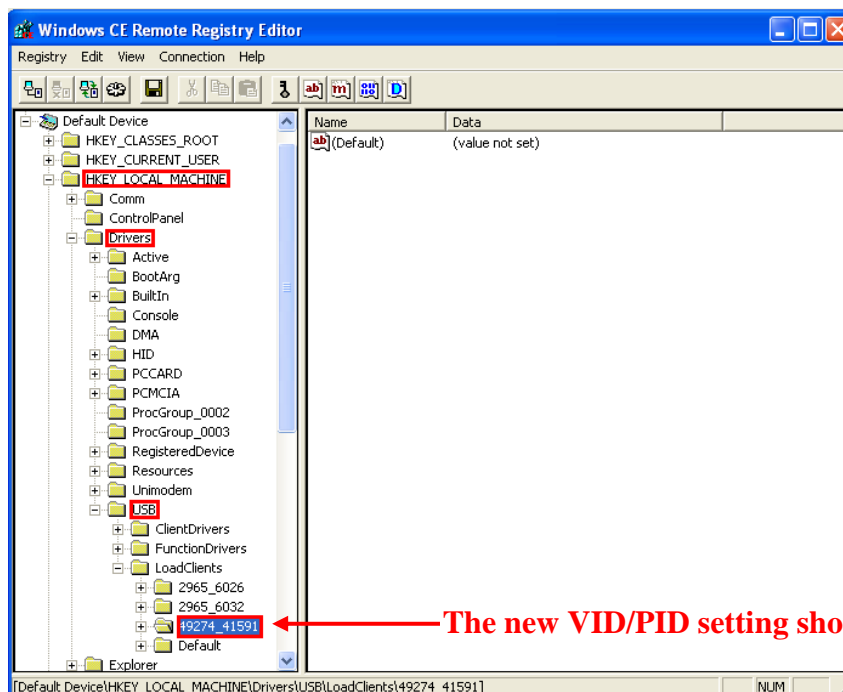
7-2. Check the modified VID/PID in WinCE Remote Registry Editor

After changed the VID/PID registry setting on your WinCE image file, you can follow the following procedures to double check if the new VID/PID setting was taken effect properly.

1. When the image has been built, click **Target>Attach Device** to download the Platform Image file onto the CE/PC.
2. After the image file is downloaded successfully, the CE/PC will be booted up to WinCE operation system by running the Platform Image file.
3. Establish the connection with CE/PC.
4. Click **Tools>Remote Registry Editor**. A pop-up window, **Select a Windows CE Device**, is shown on the screen. Select **Default Device** and click **OK**.



5. The **Default Device** icon will be shown up. Click **HKEY_LOCAL_MACHINE>Drivers>USB>LoadClients**. You will see your own VID/PID under **HKEY_LOCAL_MACHINE>Drivers>USB>LoadClients**.



7-3. Change the VID/PID setting from WinCE Remote Registry Editor manually

The following method illustrates how to change the VID/PID registry setting of AX88179/178A WinCE 6.0 driver from the WinCE Remote Registry Editor directly.

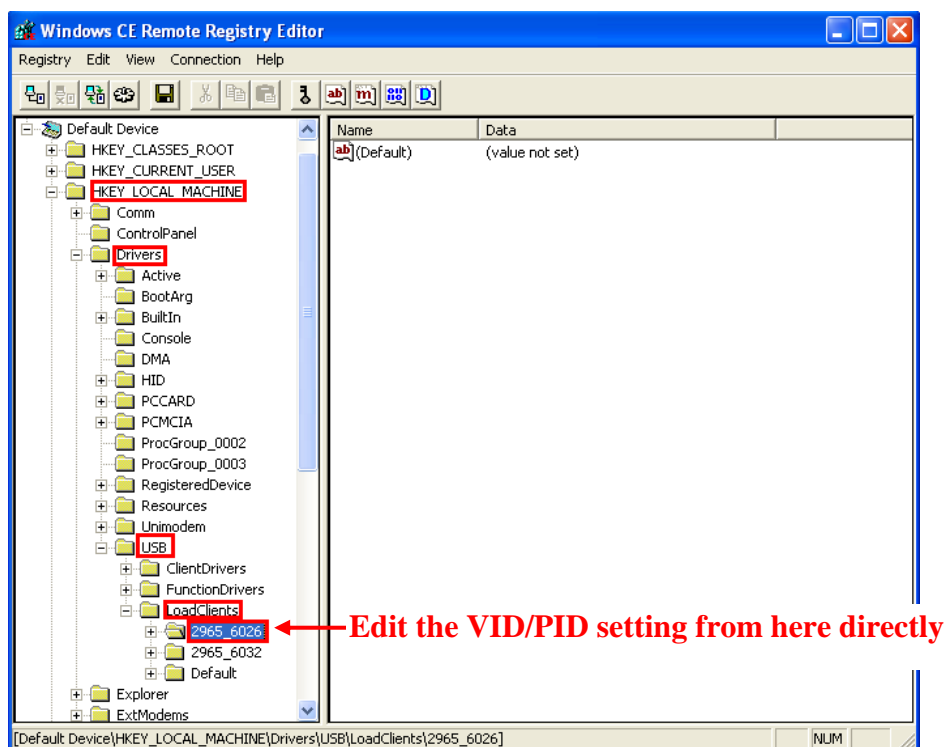
Note: This is a temporary configuration for testing purpose and will be reset to the default registry setting of WinCE 7.0 platform boot image file after rebooting the WinCE 7.0 platform. Please refer to Section 7-1 Change the VID/PID setting from the Registry File to modify the VID/PID registry setting of AX88179/178A WinCE 7.0 driver from the register file (PROJECT.REG) for official release purpose.

1. Follow Step #1 to Step #5 in Section 7-2 Check the modified VID/PID in WinCE Remote Registry Editor to establish the WinCE Remote Registry Editor connection with your WinCE 6.0 platform.
2. Modify the VID/PID registry under **HKEY_LOCAL_MACHINE>Drivers>USB>LoadClients** to meet the real VID/PID of your AX88179/178A board.

Example: The VID/PID of your AX88178A board is **C07Ah/A277h** respectively.

You should adjust the following “**2965_6026**” registry value to “**49274_41591**”.

(Please refer to the [WinCE registry VID/PID setting note](#) in Section 7-1 for more details.)



3. Un-plug/re-plug your AX88179/178A board with VID (C07Ah)/PID (A277h) in this example. The AX88179/178A WinCE 6.0 driver should work fine with your AX88179/178A board now.

8. Known Errata:

None.



**4F, No.8, Hsin Ann RD., Hsinchu Science Park,
Hsinchu, Taiwan, R.O.C.**

TEL: +886-3-5799500

FAX: +886-3-5799558

Email: support@asix.com.tw

Web: <http://www.asix.com.tw>